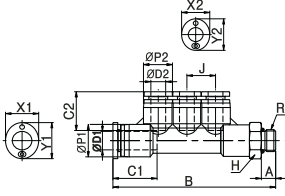


PKD-Dışlı Üçlü Dağıtıcı / Male Reducer Triple Branch



Teknik Çizim / Technical Drawing



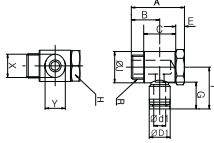
Ölçü Tablosu / Dimension Chart

MODEL	ØD1	ØD2	R	B	C1	C2	ØP1	ØP2	J	A	H	X1	Y1	X2	Y2	Orfis (mm) Orifice (mm)	Ağırlık (g) Weight (g)	Adet/Kutu Qty / Box
PKD 06-04-01	6	4	G1/8	65.7	17	16	12.4	10.4	10	6	12	12	14	10	12	3	20.4	25
PKD 06-04-02	6	4	G1/4	76	17	16	12.4	10.4	10	11	12	12	14	10	12	3	27	25
PKD 08-04-02	8	4	G1/4	70.9	18.5	16	14.4	10.4	10	11	14	14	16	10	12	3	31.2	25
PKD 08-06-02	8	6	G1/4	76	18.5	17	14.4	12.4	12	11	14	14	16	12	14	5	32.6	25
PKD 08-06-03	8	6	G3/8	74.2	18.5	17	14.4	12.4	12	12	17	14	16	12	14	5	39.9	25
PKD 10-08-03	10	8	G3/8	92.1	21	18.5	17.6	14.4	14	12	17	17	19	14	16	7	55	20

PGL(D1) - Kısa Döner Dirsek / Single Universal Elbow



Teknik Çizim / Technical Drawing



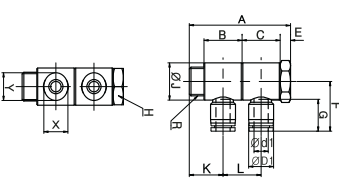
Ölçü Tablosu / Dimension Chart

MODEL	R	A	B	C	ØD1	Ød1	E	F	G	H	ØJ	X	Y	Orfis (mm) Orifice (mm)	Ağırlık (g) Weight (g)	Adet/Kutu Qty / Box
PGL 04-01(1)	G1/8	26.5	14	17	10.4	4	4	23.3	16	14	15	10	12	3	14.7	50
PGL 06-01(1)	G1/8	26.5	14	17	12.4	6	4	24.8	17	14	15	12	14	5	15.5	50
PGL 06-02(1)	G1/4	32	17.5	19	12.4	6	5	25.9	17	17	18	12	14	5	28.4	50
PGL 08-01(1)	G1/8	26.5	14	17	14.4	8	4	26.3	18.5	14	15	14	16	7	16.4	50
PGL 08-02(1)	G1/4	32	17.5	19	14.4	8	5	26.3	18.5	17	18	14	16	7	29.8	25
PGL 08-03(1)	G3/8	36.5	19.5	22	14.4	8	6	26.3	18.5	21	21.5	14	16	7	52.8	25
PGL 10-02(1)	G1/4	32	17.5	19	17.6	10	5	29.8	21	17	18	17	19	8	32.5	25
PGL 10-03(1)	G3/8	36.5	19.5	22	17.6	10	6	29.8	21	21	21.5	17	19	8	54.7	25
PGL 12-03(1)	G3/8	36.5	19.5	22	21.2	12	6	33.3	22.5	21	21.5	21	23	10	57.7	20
PGL 12-04(1)	G1/2	40.5	22.5	24	21.2	12	6	33.3	22.5	24	26	21	23	10	92.9	20

PGL(D2) - İki Kısa Döner Dirsek / Double Universal Elbow



Teknik Çizim / Technical Drawing



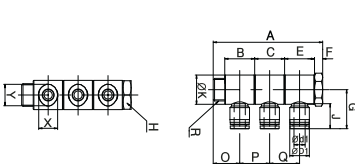
Ölçü Tablosu / Dimension Chart

MODEL	R	A	B	C	ØD1	Ød1	E	F	G	H	ØJ	K	L	X	Y	Orfis (mm) Orifice (mm)	Ağırlık (g) Weight (g)	Adet/Kutu Qty / Box
PGL 04-01(2)	G1/8	43.5	17	17	10.4	4	4	23.3	16	14	15	14	17	10	12	3	28.5	25
PGL 06-01(2)	G1/8	43.5	17	17	12.4	6	4	24.8	17	14	15	14	17	12	14	5	30.5	25
PGL 06-02(2)	G1/4	46	19	19	12.4	6	5	25.9	17	17	18	17.5	19	12	14	5	33	25
PGL 08-01(2)	G1/8	43.5	17	17	14.4	8	4	26.3	18.5	14	15	14	17	14	16	7	44.5	20
PGL 08-02(2)	G1/4	46	19	19	14.4	8	5	26.3	18.5	17	18	17.5	19	14	16	7	47.5	20
PGL 08-03(2)	G3/8	58.5	20	20	14.4	8	6	26.3	18.5	21	21.5	19.5	22	14	16	7	52.5	20
PGL 10-02(2)	G1/4	46	19	19	17.6	10	5	29.8	21	17	18	17.5	19	17	19	8	80	20
PGL 10-03(2)	G3/8	58.5	22	22	17.6	10	6	29.8	21	21	21.5	19.5	22	17	19	8	91	20
PGL 12-03(2)	G3/8	58.5	22.4	22.4	21.2	12	6	33.3	22.5	21	21.5	19.5	22	21	23	10	152	20
PGL 12-04(2)	G1/2	64.5	24	24	21.2	12	6	33.3	22.5	24	26	22.5	24	21	23	10	159	20

PGL(3) - Üçlü Kısa Döner Dirsek / Triple Universal Elbow



Teknik Çizim / Technical Drawing



Ölçü Tablosu / Dimension Chart

MODEL	R	A	B	C	ØD1	Ød1	E	F	G	H	J	ØK	O	P	Q	X	Y	Orfis (mm) Orifice (mm)	Ağırlık (g) Weight (g)	Adet/Kutu Qty / Box
PGL 04-01(3)	G1/8	60.5	17	17	10.4	4	17	4	23.3	14	16	15	14	17	17	10	12	3	36.5	25
PGL 06-01(3)	G1/8	60.5	17	17	12.4	6	17	4	24.8	14	17	15	14	17	17	12	14	5	39	25
PGL 06-02(3)	G1/4	70	19	19	12.4	6	19	5	25.9	17	17	18	17.5	19	19	12	14	5	42	20
PGL 08-01(3)	G1/8	60.5	17	17	14.4	8	17	4	26.3	14	18.5	15	14	17	17	14	16	7	57.5	15
PGL 08-02(3)	G1/4	70	19	19	14.4	8	19	5	26.3	17	18.5	18	17.5	19	19	14	16	7	60.5	15
PGL 08-03(3)	G3/8	80.5	22	22	14.4	8	22	6	26.3	21	18.5	21.5	19.5	22	22	14	16	7	65	15
PGL 10-02(3)	G1/4	70	19	19	17.6	10	19	5	29.8	17	21	18	17.5	19	19	17	19	8	107.5	15
PGL 10-03(3)	G3/8	80.5	22	22	17.6	10	22	6	29.8	21	21	21.5	19.5	22	22	17	19	8	114	15
PGL 12-03(3)	G3/8	80.5	22	22	21.2	12	22	6	33.3	21	22.5	21.5	19.5	22	22	21	23	10	187	12
PGL 12-04(3)	G1/2	88.5	24	24	22.2	12	24	6	33.3	24	22.5	26	22.5	24	24	21	23	10	195	12