

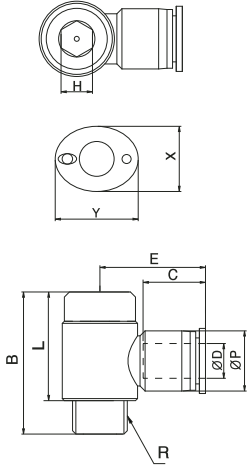
**POL- Allenli Kısa Döner Dirsek / Hex. Holed Banjo**



**Ölçü Tablosu / Dimension Chart**

MODEL	ØD	R	A	B	L	ØP	C	E	H	X	Y	Orifis (mm) Orifice (mm)	Ağırlık (g) Weight (g)	Adet / Kutu Qty / Box
POL 04-M5	4	M5	3.5	18	14.5	10.4	16	21	5	10	12	3	6.5	100
POL 04-M6		M6	4.5	19	14.5	10.4	16	21	5	10	12	3	6.5	100
POL 04-01		G1/8	8	26.9	22.5	10.4	16	21.5	6	10	12	3	10	50
POL 06-M5	6	M5	3.5	18	14.5	12.4	17	24.9	5	12	14	5	14	100
POL 06-M6		M6	4.5	19	14.5	12.4	17	24.9	5	12	14	5	20	100
POL 06-01		G1/8	8	26.9	22.5	12.4	17	25.7	6	12	14	5	15	50
POL 06-02	6	G1/4	11	29.5	23.5	12.4	17	25.7	8	12	14	5	21.5	50
POL 06-03		G3/8	12	33.8	27.3	12.4	17	28.2	10	12	14	5	23	25
POL 08-01		G1/8	8	26.9	22.5	14.4	18.5	25.1	6	14	16	7	22	50
POL 08-02	8	G1/4	11	29.5	23.5	14.4	18.5	28.3	8	14	16	7	28	50
POL 08-03		G3/8	12	33.8	27.3	14.4	18.5	28.7	10	14	16	7	36	25
POL 08-04		G1/2	15	45	36.9	14.4	18.5	30.6	12	14	16	7	44	20
POL 10-02	10	G1/4	11	29.5	23.5	17.6	21	31.7	8	17	19	8	41	25
POL 10-03		G3/8	12	33.8	27.3	17.6	21	32.1	10	17	19	8	49.5	25
POL 10-04		G1/2	15	45	26.9	17.6	21	35	12	17	19	8	57	20
POL 12-02	12	G1/4	11	29.5	23.5	21	22.5	35.6	8	21	23	10	58.9	25
POL 12-03		G3/8	12	33.8	27.3	21	22.5	36	10	21	23	10	68	25
POL 12-04		G1/2	15	45	26.9	21	22.5	36	12	21	23	10	83	25

**Teknik Çizim / Technical Drawing**



**PLL - Uzun Dirsek / Extended Male Elbow**



**Ölçü Tablosu / Dimension Chart**

MODEL	ØD	R	ØP	A	B	C	E	H	X	Y	Orifis (mm) Orifice (mm)	Ağırlık (g) Weight (g)	Adet / Kutu Qty / Box
PLL 04-M5	4	M5	10.4	4	30.9	16	18.7	8	10	12	2	11.3	100
PLL 04-M6		M6	10.4	6.5	31.9	16	18.7	8	10	12	2	11.3	100
PLL 04-01		G1/8	10.4	8	36	16	18.7	10	10	12	2.6	17.2	50
PLL 04-02	4	G1/4	10.4	11	39	16	18.7	14	10	12	2.6	30.1	50
PLL 04-03		G3/8	10.4	12	40.5	16	18.7	17	10	12	2.6	40	50
PLL 06-M5		M5	12.4	4	35.4	17	20	8	12	14	2	11.8	50
PLL 06-M6	6	M6	12.4	6.5	36.9	17	20	8	12	14	3	11.8	50
PLL 06-01		G1/8	12.4	8	37.8	17	21.1	12	12	14	4.6	25.4	50
PLL 06-02		G1/4	12.4	11	41.8	17	21.1	14	12	14	4.6	34.2	50
PLL 06-03	6	G3/8	12.4	12	44.3	17	21.1	17	12	14	4.6	51.2	50
PLL 08-01		G1/8	14.4	8	42.4	18.5	22.8	14	14	16	5	34	50
PLL 08-02		8	G1/4	14.4	11	46.4	18.5	22.8	14	14	16	6	41
PLL 08-03	G3/8		14.4	12	47.9	18.5	22.8	17	14	16	6	61.8	25
PLL 08-04	G1/2		14.4	15	52.4	18.5	22.8	21	14	16	6	70	20
PLL 10-01	10	G1/8	17.6	8	50.6	21	26.1	17	17	19	5	60.2	25
PLL 10-02		G1/4	17.6	11	53.6	21	26.1	17	17	19	8	62.7	25
PLL 10-03		G3/8	17.6	12	55.1	21	26.1	17	17	19	8	72.1	25
PLL 10-04		G1/2	17.6	15	58.6	21	26.1	21	17	19	8	97.7	20
PLL 12-01	12	G1/8	21	8	56	22.5	24.3	21	21	23	5	90	25
PLL 12-02		G1/4	21	11	59	22.5	24.3	21	21	23	8	99.7	25
PLL 12-03		G3/8	21	12	60.5	22.5	24.3	21	21	23	9	105.2	20
PLL 12-04		G1/2	21	15	34	22.5	24.3	21	21	23	9	110.8	20

**Teknik Çizim / Technical Drawing**

