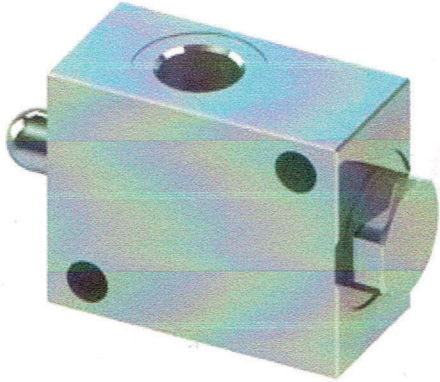


FCM

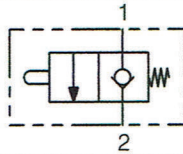
Normally closed end - stroke valves



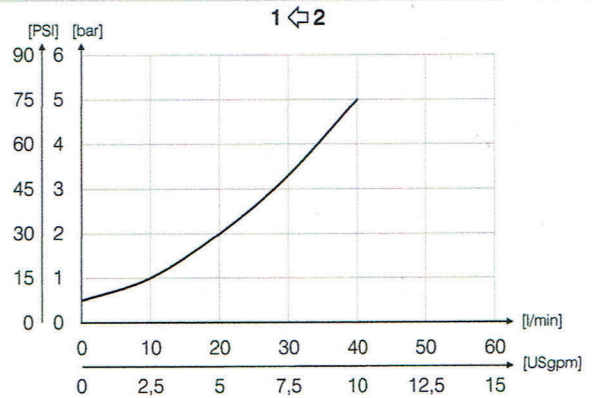
Ordering Code

		01	02
		FCM	
01	(Normally closed end - stroke valves)	FCM	
02	Dimensione (Size)	BSP1/4	140N
		BSP3/8	380N

Technical data



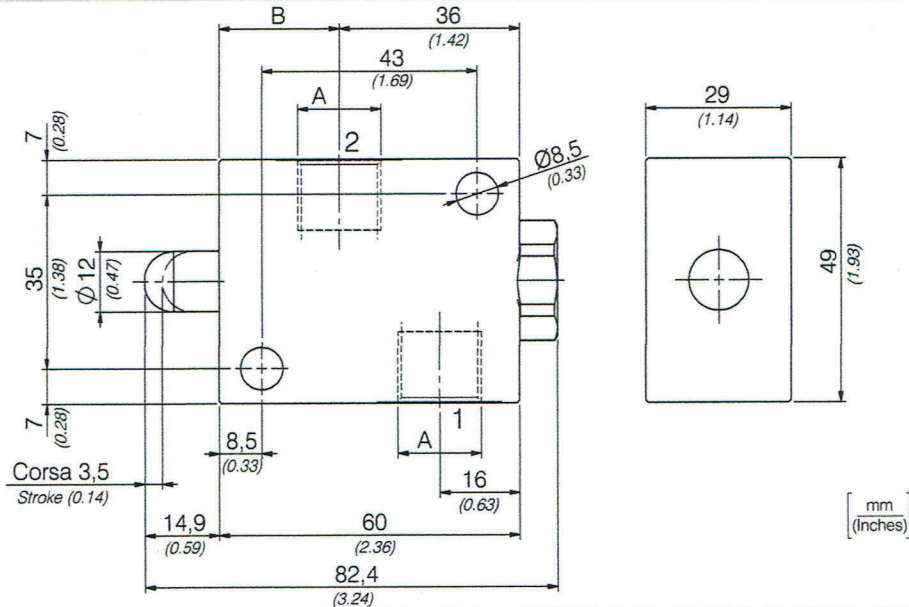
Performances



Technical data

Mineral oil	ISO 6743/4 (DIN 51524)
Oil viscosity	15-250 mm ² /s (15 to 250 cSt)
Max contamination index with filter	ISO 4406:1999 Classe 19/17/14
Oil temperature	-20°C +80°C -4°F + 176°F
Ambient temperature	-20°C +50°C -4°F + 122°F

It is necessary a filter use to protect the valve (advised filtration 15 μm)

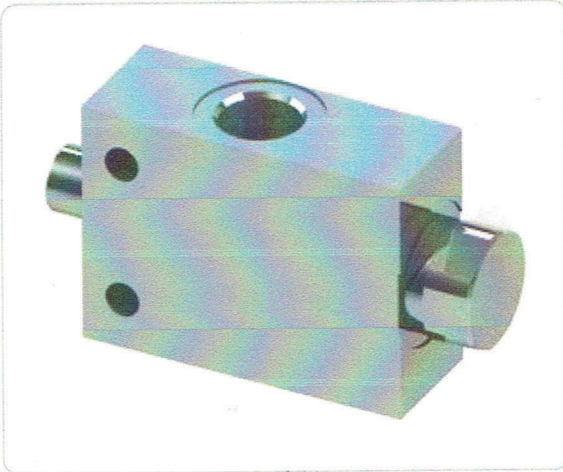


Technical characteristics

Code	A	B	Portata max (l/min) Max flow (USgpm)	Pressione max (bar) Max pressure (PSI)	Approx weight (lb)
FCM140N	BSP1/4	26,5(1.04)	40(10.6)	350 (5075)	0,53(1.16)
FCM380N	BSP3/8	24(0.94)			0,50(1.10)

FCM120N

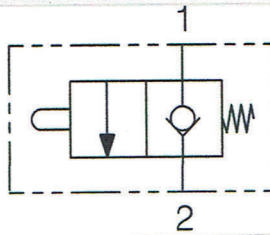
Normally closed end - stroke valves



Ordering Code

		01	02	
		FCM	120N	
01	(Normally closed end - stroke valves)			FCM
02	Dimensione (Size)	BSPP1/2		120N

Hydraulic circuit

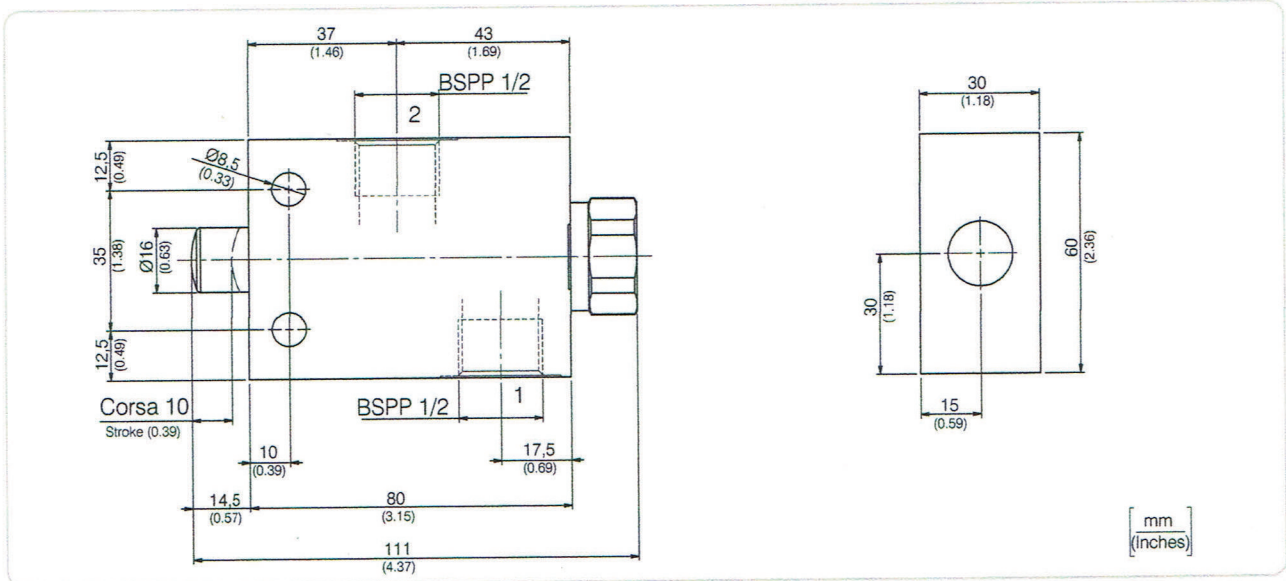
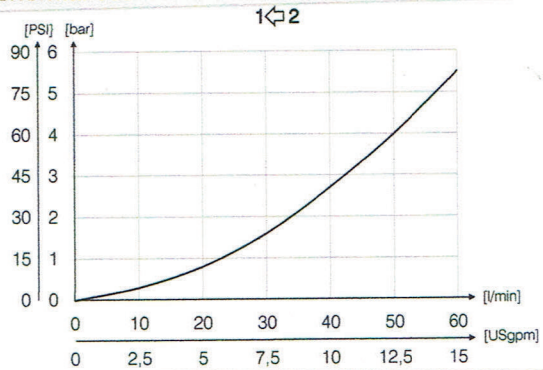


Technical data

Mineral oil	ISO 6743/4 (DIN 51524)
Oil viscosity	15-250 mm ² /s (15 to 250 cSt)
Max contamination index with filter	ISO 4406:1999 Classe 19/17/14
Oil temperature	-20°C +80°C -4°F + 176°F
Ambient temperature	-20°C +50°C -4°F + 122°F

It is necessary a filter use to protect the valve (advised filtration 15 μm)

Performances



Technical characteristics

Code	Portata max (l/min) Max flow (USgpm)	Pressione max (bar) Max pressure (PSI)	Approx weight (lb)
FCM120N	60(15.8)	300 (4350)	1,01(2.22)