

WINMAN V61 Serisi / V61 Series

Karakteristik Özellikler / Characteristic Features

- V61 motor is a disc valve type gerolor motor.
- Advanced design in disc distribution flow, which can provide improved performance at low speed.
- Advanced design of shaft seal, which can bear higher pressure.
- Advanced distribution mechanism design, which has the automatic compensation function.
- Double-rolling bearing design, which permit higher radial loads.
- A variety of connection types of flange, output shaft and oil port.

Ana Özellikler / Main Specification

(ml/r) Displacement		195	245	310	395	490	625	800	985
(LPM) Flow	Cont.	150	150	150	150	150	150	150	150
	Int..	170	210	225	225	225	225	225	225
(RPM) Speed	Cont.	776	615	484	385	308	242	186	155
	Int..	865	836	699	572	453	354	275	230
(MPa) Pressure	Cont.	20.5	20.5	20.5	20.5	17	14	12	12
	Int..	31	31	31	31	27.5	17	14	14
(N*m) Torque	Cont.	572	572	928	1156	1213	1331	1378	1565
	Int..	852	852	1356	1633	1878	1368	1645	1877

1. Intermittent means the entrance of the maximum pressure; continuous working pressure means the differential pressure.
2. Motor should not work under the highest pressure and the maximum speed.
3. The running time should not exceed 10% under intermittent working conditions
4. Recommending N68 anti-wear hydraulic oil, viscosity 37-73cSt, cleanliness ISO 18/13.
5. The Maximum working temperature is 80°.
6. One hour running time under 40% of maximum working pressure is recommended before full capacity working.
7. The maximum allowable back pressure is 10MPa, but the recommended back pressure should not exceed 5MPa. a leaking pipes is needed when exceeding.

WINMAN V61Performans Verisi / V61 Performance Data
V61-195 195ml/r

		ΔP (MPa)								
		3.5	7	10.5	14	17	20.5	24	27.5	31
Flow (L/min)	15	80 76	175 74	271 71	366 65	454 62	521 45	589 32	654 18	
	30	86 153	179 148	274 144	371 130	464 116	545 116	626 99	704 82	779 65
	45	85 230	180 226	279 221	374 212	476 202	565 186	654 168	751 148	825 118
	61	79 307	179 303	280 300	376 290	475 283	574 258	664 236	760 214	845 181
	76	80 385	179 379	281 373	380 365	480 255	574 332	671 305	769 280	
	91	80 462	174 456	274 450	375 439	474 430	575 412	669 388	770 363	
	106	74 539	176 532	271 525	375 513	474 502	570 541	669 448	770 420	
	121	70 617	169 609	269 602	369 590	470 575	570 541	670 510	763 480	
	136	70 692	163 684	264 674	364 660	465 645	565 600	664 564		
	151	70 770	164 759	261 745	364 733	466 717	559 666	660 624		
	179	65 866	161 854	259 844	360 825	461 808				

V61-245 245ml/r

		ΔP (MPa)								
		3.5	7	10.5	14	17	20.5	24	27.5	31
Flow (L/min)	15	106 60	227 56	346 54	461 48	577 42	643 39	751 31	853 12	960 6
	30	110 120	237 116	274 144	475 104	596 95	701 81	800 67	905 48	1018 35
	45	110 182	235 179	279 221	482 165	607 157	721 141	840 123	955 107	1075 90
	61	112 244	236 240	280 300	487 228	611 221	730 202	844 184	960 163	1181 144
	76	105 306	232 301	281 373	485 287	614 277	735 256	853 238	980 217	
	91	104 365	231 361	274 450	482 348	612 338	735 314	861 290	979 270	
	106	102 426	227 421	271 525	483 403	611 375	733 355	855 335	980 320	
	121	91 489	216 481	269 602	470 461	600 447	725 422	850 395		
	136	80 550	210 544	264 674	460 524	580 510	710 480	840 454		
	151	80 612	202 606	261 745	456 585	580 570	700 538	800 507		
	179	66 688	202 682	259 844	446 685	575 640	685 606			
	189		195 758	316 749	441 731	555 710				
208		191 834	311 834	431 804						

V61-310 310ml/r

		ΔP (MPa)								
		3.5	7	10.5	14	17	20.5	24	27.5	31
Flow (L/min)	15	136 47	292 45	431 42	573 38	684 32	801 21	934 17	1020 10	1070 3
	30	140 95	300 92	451 87	596 81	732 73	870 63	985 54	1100 44	1235 32
	45	140 143	306 140	461 135	612 129	760 120	909 110	1045 99	1180 88	1330 75
	61	140 192	302 188	462 184	615 178	771 167	920 154	1060 140	1200 124	
	76	135 241	296 236	457 232	617 226	772 216	925 200	1075 182	1220 165	
	91	130 289	296 282	456 278	614 273	774 260	929 254	1078 232	1226 215	
	106	130 336	290 333	450 327	609 320	768 308	928 295	1073 276		
	121	125 384	285 381	444 375	600 367	763 354	918 341	1060 320		
	136	120 430	276 421	434 416	590 410	748 396	912 383	1050 360		
	151	115 478	271 466	424 461	578 456	743 441	902 427			
	179	110 597	245 582	384 576	523 570	682 551	836 534			
	227		220 698	364 691	513 684	647 661				

V61-395 395ml/r

		ΔP (MPa)								
		3.5	7	10.5	14	17	20.5	24	27.5	31
Flow (L/min)	15	188 37	378 36	563 34	573 38	923 28	1083 21	1276 13	1371 5	1635 1
	30	188 75	383 73	578 71	596 81	953 64	1137 54	1316 44	1456 32	
	45	188 114	388 111	583 108	612 129	968 99	1152 90	1341 80	1540 78	
	61	183 153	383 150	583 146	615 178	968 131	1156 125	1345 115		
	76	183 192	383 188	583 186	617 226	973 174	1161 161			
	91	173 228	373 228	573 224	614 273	968 211	1156 203			
	106	168 267	368 265	568 260	609 320	963 247	1151 235			
	121	163 305	353 303	558 298	600 367	947 281	1146 268			
	136	158 345	343 339	548 335	590 410	733 316				
	151	153 382	328 379	538 374	578 456	917 358				
	179	133 481	303 474	518 468	523 570	913 448				
	227		283 569	502 561	721 551					

WINMAN V61 Performans Verisi / V61 Performance Data
V61-490 490ml/r

		ΔP (MPa)							
		3.5	7	10.5	14	17	20.5	24	27.5
Flow (L/min)	15	235 30	486 29	725 28	962 27	1195 25	1408 21	1643 17	
	30	235 60	486 59	734 57	973 54	1213 51	1442 45	1680 38	
	45	235 91	485 89	733 87	974 84	1218 79	1450 71		
	61	234 122	480 121	728 118	973 114	1217 109	1456 100		
	76	225 152	470 150	723 147	972 144	1217 139			
	91	220 184	469 181	717 180	968 176	1210 171			
	106	209 214	459 211	708 208	957 204	1205 198			
	121	194 244	448 241	700 237	947 232	1200 226			
	136	175 275	433 272	683 265	937 260	1170 255			
	151	160 306	423 303	673 295	917 290				
	179	130 382	364 379	588 365					
	227		323 454	546 442					

V61-625 625ml/r

		ΔP (MPa)							
		3.5	5	7	8.5	10.5	12	14	17
Flow (L/min)	15	275 24	425 24	570 23	709 22	849 21	954 18	1063 16	1190 15
	30	295 45	450 44	604 44	754 43	923 42	1093 39	1267 37	1355 36
	45	295 72	448 71	609 71	764 70	918 68	123 66	1327 64	1375 63
	61	285 94	445 93	604 92	759 91	914 89	1118 87	1323 85	1370 83
	76	280 119	439 118	594 117	754 116	914 115	1118 112	1324 110	1372 107
	91	264 143	429 142	585 140	744 139	904 138	1108 135	1317 132	1365 130
	106	255 168	414 166	574 165	734 164	893 162	1103 159	1312 156	
	121	240 192	400 190	559 188	719 187	878 185	1088 182		
	136	220 216	379 214	539 213	698 212	853 210	1047 207		
	151	200 240	360 239	519 238	379 237	833 236			
	179		310 298	469 296	629 294	788 290			
	227		254 355	430 353	588 350				

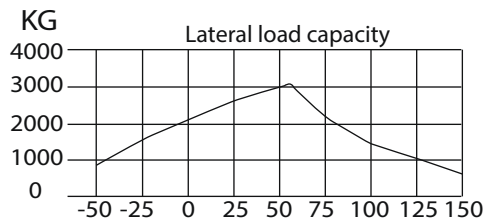
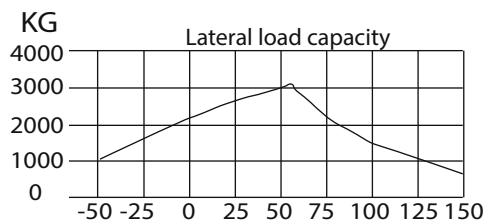
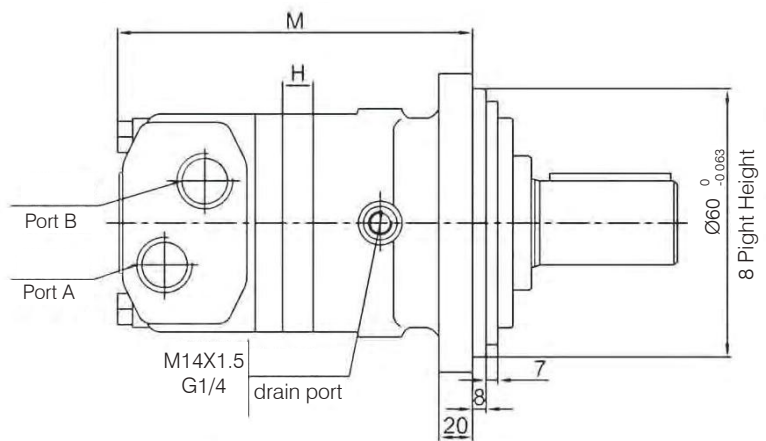
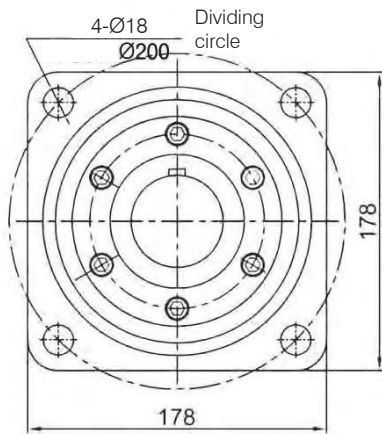
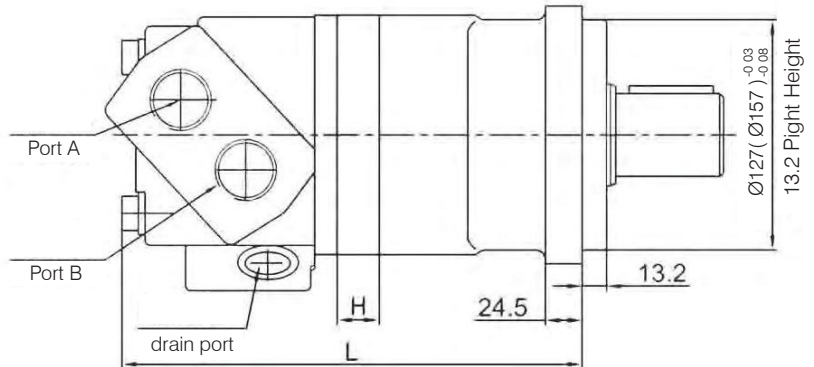
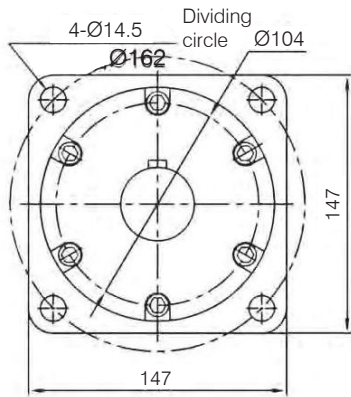
V61-800 800ml/r

		ΔP (MPa)						
		3.5	5	7	8.5	10.5	12	14
Flow (L/min)	15	434 18	607 17	838 17	1018 16	1238 15	1377 14	1646 13
	30	419 36	395 35	828 35	1003 34	1238 33	1412 31	1606 29
	45	379 55	564 55	794 54	870 54	1187 53	1358 51	
	61	339 75	519 74	758 72	837 71	1167 70		
	76	324 93	498 92	728 90	897 89	1135 87		
	91	314 111	468 110	698 109	857 108	1076 105		
	106	309 129	448 128	648 127	797 125			
	121	279 148	419 146	608 145	746 143			
	136	269 166	398 165	547 165	695 164			
	151	249 184	348 183	497 182	631 180			
	179		299 230	438 228				
	227			378 276				

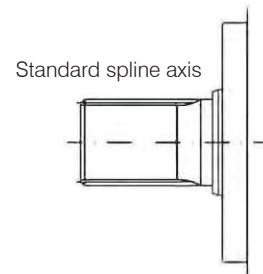
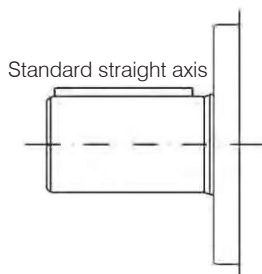
V61-985 985ml/r

		ΔP (MPa)						
		3.5	5	7	8.5	10.5	12	14
Flow (L/min)	15	484 15	774 15	964 14	1203 14	1443 13	1567 13	1786 12
	30	494 30	749 30	994 29	1233 28	1477 27	1637 26	1871 25
	45	494 45	749 45	1000 44	1248 43	1492 42	1696 41	
	61	489 61	739 61	995 60	1243 59	1497 58		
	76	475 77	730 76	983 76	1233 75	1481 74		
	91	460 92	704 92	959 91	1217 90	1466 89		
	106	444 107	700 107	949 106	1197 105	1446 103		
	121	425 123	674 122	923 121	1156 120			
	136	394 138	645 138	893 137	1120 135			
	151	365 153	609 152	864 151	1080 150			
	179	325 191	585 190	829 189				
	227		525 230	809 229				

WINMAN V61 Boyutlar ve Montaj Verileri / V61 Dimensions and Mounting Data

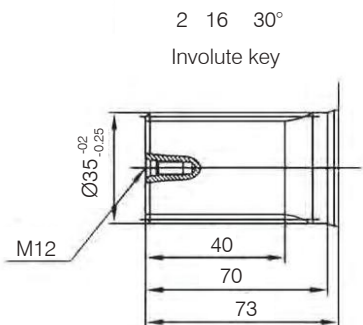
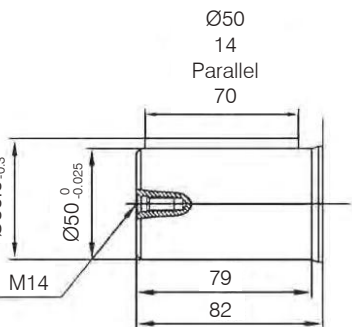
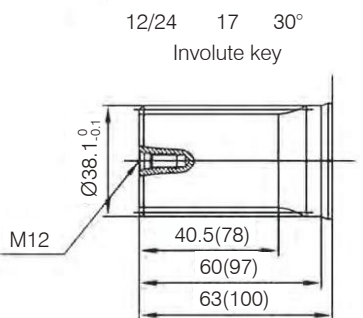
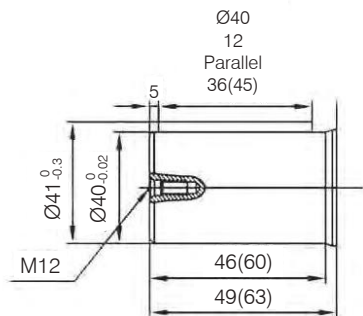
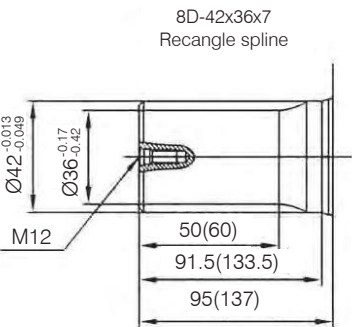
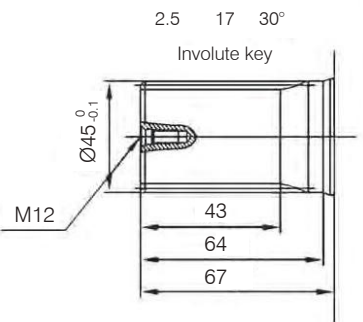
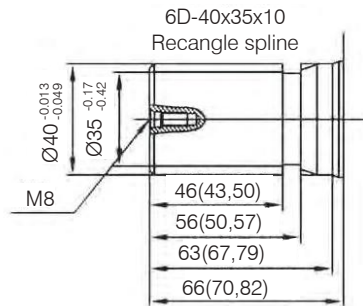
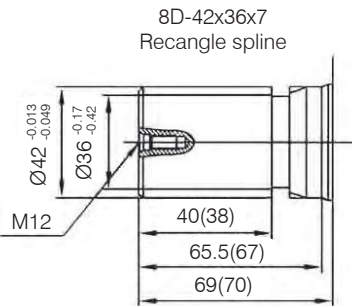
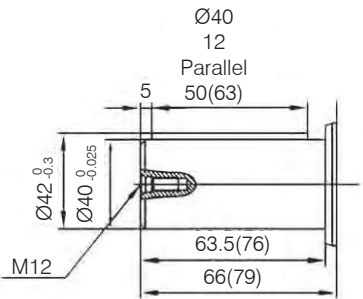
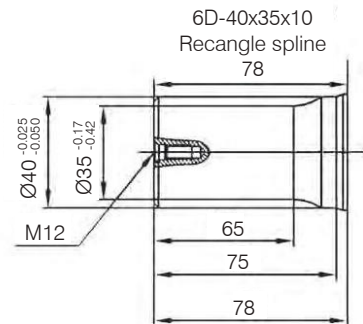
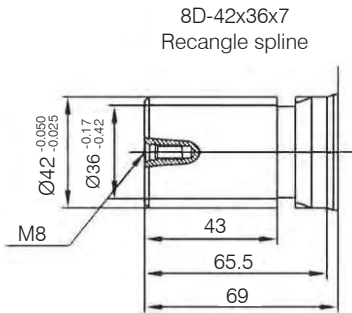
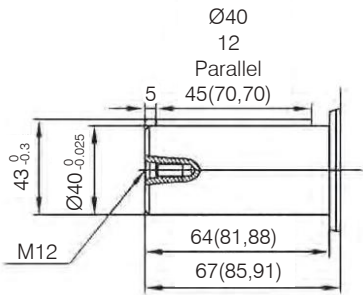


Standard Direction of The Motor Rotation:
CW-When A Port pressurized
Viewed From the Shaft End.

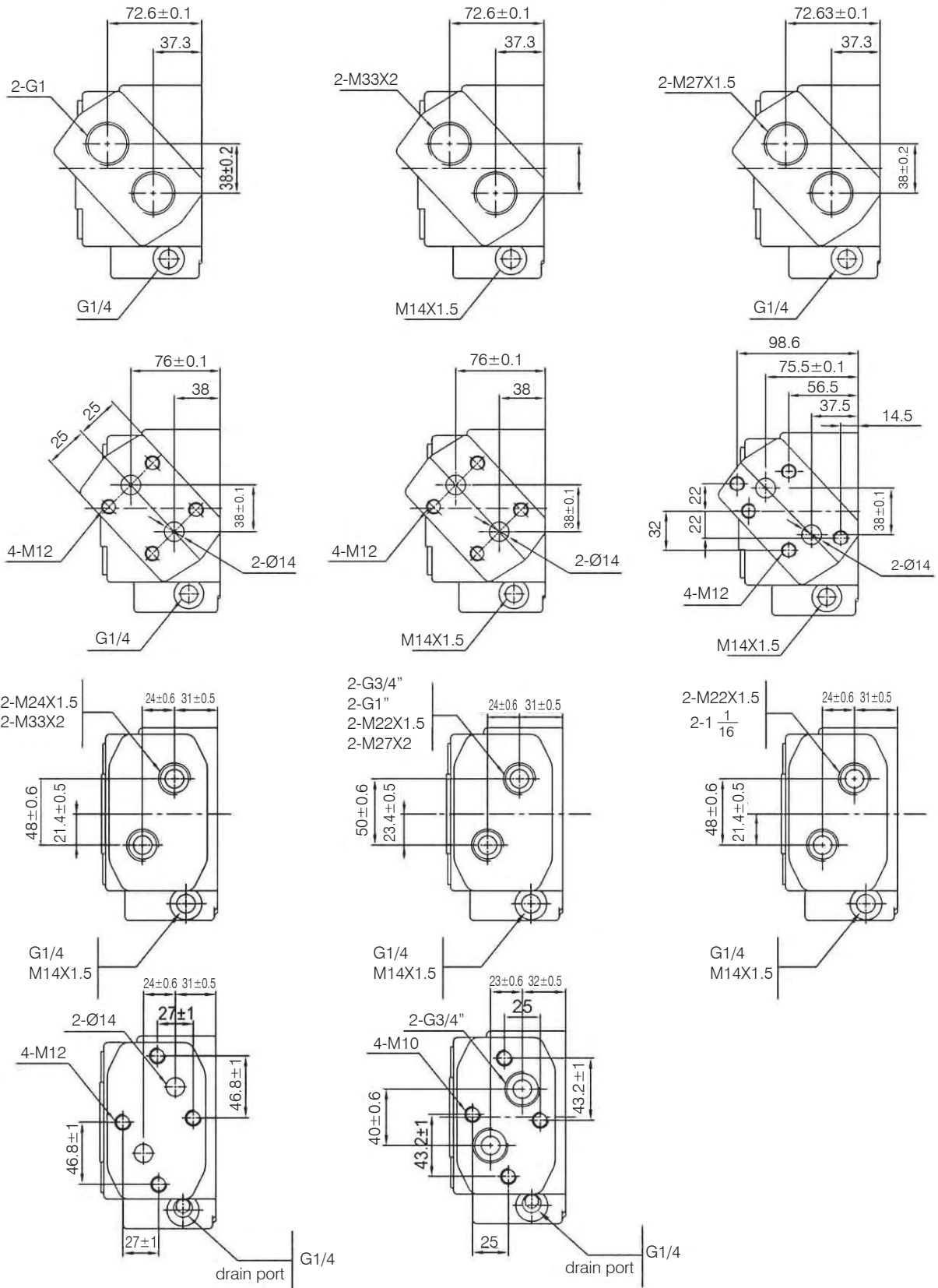


Displacement (cc/r)	H (mm)	L (mm)	M (mm)
195	21.7	245.7	230.7
245	27.3	251.3	236.3
310	34.6	258.6	243.6
395	43.4	267.4	252.4
490	54.4	279.4	264.4
625	69.2	293.2	278.2
800	89	313	298
985	108.8	332.8	317.8

WINMAN V61 Boyutlar ve Montaj Verileri / V61 Dimensions and Mounting Data



WINMAN V61 Boyutlar ve Montaj Verileri / V61 Dimensions and Mounting Data



WINMAN V61 Sipariş Bilgileri / V61 Ordering Information

Feature			Displacement/NO.							
Flange	Shaft	Oil port/ drain port	195	245	310	395	490	625	800	985
Square flange; Pilot:Ø127	Ø40 P12 x 63	M33 x 2; M14 x 1.5								
Square flange; Pilot:Ø125	Ø40 P12 x 45	G3/4; G1/4; Plate-connection: 4-M10								
Square flange; Pilot:Ø160	Ø50 x 79 P14 x 70	M33 x 2; M14 x 1.5								
Square flange; Pilot:Ø127	Ø40 P12 x 50	M33 x 2; M14 x 1.5								
	Ø40 P12 x 45	M33 x 2; G1/4								
Square flange; Pilot:Ø125	Ø40 P12 x 63	M24 x 1.5; M14 x 1.5								
Square flange; Pilot:Ø160	Ø50 x 79 P14 x 70	G1; G1/4; Plate-connection: 4-M12								
Square flange; Pilot:Ø127	Ø40 P12 x 63	G1; G1/4	122 898-61	144 431-61	110 470-61	110 471-61	110 472-61	144 415-61	122 709-61	-
	Ø38.1 P9.5 x 45	1-5/16; 7/16-20UNF								
	8D-2 x 36 x 7	M33 x 2; M14 x 1.5								
	8D-40 x 35 x 10	M33 x 2; M14 x 1.5								
Square flange; Pilot:Ø160	6D-40 x 35 x 10	G1; G1/4; Plate-connection: 4-M12								
Square flange; Pilot:Ø127	8D-42 x 36 x 7	Ø14; Plate-connection: 4-M12								
Square flange; Pilot:Ø160	6D-40 x 35 x 10	M33 x 2; G1/4								
Square flange; Pilot:Ø127	6D-40-35 x 10	M33 x 2; M14 x 1.5								
Square flange; Pilot:Ø160	6D-40-35 x 10	M33 x 2; M14 x 1.5								
	Spline:17 M=2.5	G1; G1/4								
Square flange; Pilot:Ø127	Spline:16 M=2	M33 x 2; M14 x 1.5								

Not: Diğer modeller için bilgi alınız.

WINMAN Tip Numarası V61 Performans Verisi / Type Number-V61 Series Motors

1	2	3	4	5	6	7	8
V61							

1) V61

Position V61 series motors

2) CC/R

Position displacement

- 1, 195
- 2, 245
- 3, 310
- 4, 396
- 5, 490
- 6, 625
- 7, 800
- 8, 985

3) Position Flange and pilot

- A, 4 bolt Square-flange, pilot $\varnothing 125 \times 13 \text{cm}$
- B, 4 bolt Square-flange, pilot $\varnothing 127 \times 13.2 \text{mm}$
- C, 4 bolt Square-flange, pilot $\varnothing 160 \times 8 \text{mm}$

4) Position shaft

- 1, $\varnothing 32$ straight shaft, flat key 10x8x36
- 2, $\varnothing 32$ straight shaft, flat key 10x8x45
- 3, $\varnothing 40$ straight shaft, flat key 12x8x45
- 4, $\varnothing 40$ straight shaft, flat key 12x8x70
- 5, $\varnothing 40$ straight shaft, flat key 12x8x50
- 6, $\varnothing 40$ straight shaft, flat key 12x8x63
- 7, $\varnothing 50$ straight shaft, flat key 14x9x70
- 8, Spline shaft 8D-42x36x7
- 9, Splined shaft 6D-40x35x10
- 10, Splined shaft 12/24DP 17 tooth
- 11, Splined shaft 2.5 17 tooth
- 12, Splined shaft 2 16 tooth

5) Position V61 series motors

- A, G1/2
- B, M22X1.5
- C, $\varnothing 14$
- D, ZG1/2
- E, M18X1.5
- F, M24X1.5
- G, 1-5/16-12UNF
- H, $\varnothing 13$
- I, M27x2
- J, G3/4
- K, M33x2
- L, 11/16

6) Position drain port

- 2, M14x1.5
- 3, G1/4
- 4, 7/16-20UNF
- 5, R1/4

7) Position paint color

- A, silver paint
- B, blue
- C, black
- D, no paint

7) Position rotation direction

- A, standard
- B, opposite