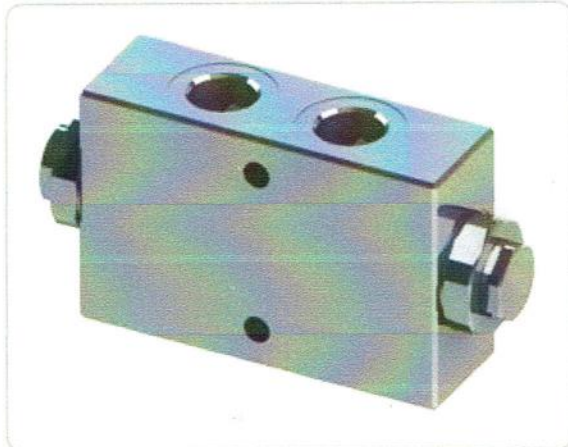


**VRDL**

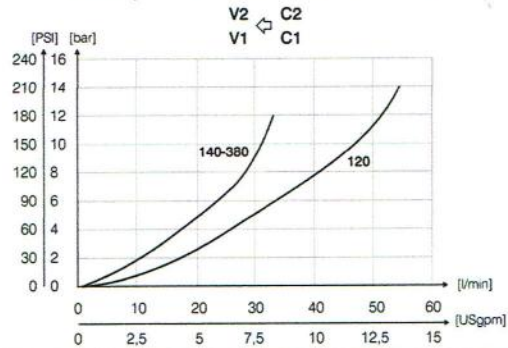
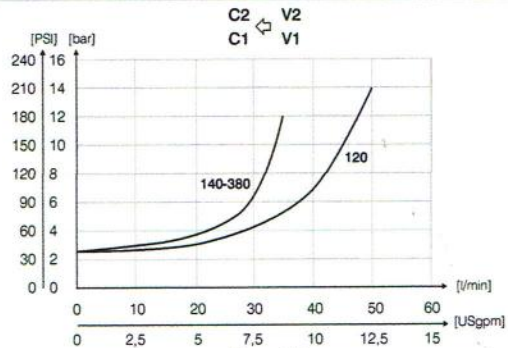
**Double acting pilot check valves**



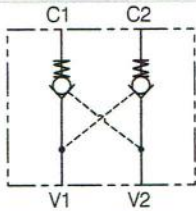
**Ordering Code**

		01	02	
		VRDL		
01	(Double acting pilot check valves)			VRDL
02	Dimensione Size	BSP1/4		140N
		BSP3/8		380N
		BSP1/2		120N

**Performances**



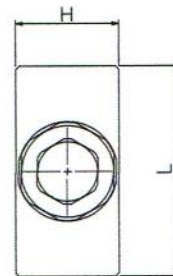
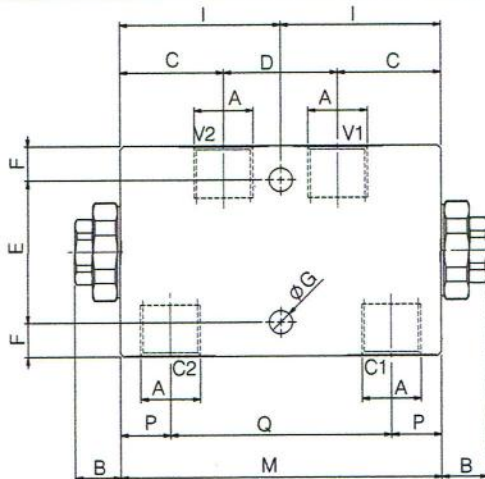
**Hydraulic circuit**



**Technical data**

Mineral oil	ISO 6743/4 (DIN 51524)
Oil viscosity	15-250 mm <sup>2</sup> /s (15 to 250 cSt)
Max contamination index with filter	ISO 4406:1999 Classe 19/17/14
Oil temperature	-20°C +80°C -4°F + 176°F
Ambient temperature	-20°C +50°C -4°F + 122°F

It is necessary a filter use to protect the valve (advised filtration 15 μm)  
 Max leakage 0,015 in<sup>3</sup>/min - 5 drops/min



[ mm ]  
[ inches ]

**Technical characteristics**

Code	A	Portata max (l/min) Max flow (USgpm)	Pressione max (bar) Max pressure (PSI)	B	C	D	E	F	G	H	I	L	M	P	Q	Approx weight (lb)	Pilot ratio
VRDL140N	BSP1/4	35(9.2)	350 (5075)	12,5	29	32	40	10	6,5	30	40	60	90	14	62	1,18 (2.60)	1:7
VRDL380N	BSP3/8			(0.49)	(1.14)	(1.26)		(0.39)	(0.26)	(1.18)	(1.57)	(2.36)	(3.54)	(0.55)	(2.44)	1,10 (2.42)	
VRDL120N	BSP1/2	50(13.2)	14,5	38	34	15	8,5	35	55	70	110	20,5	69	1,77 (3.90)			
				(0.57)	(1.50)	(1.34)		(0.59)	(0.33)	(1.38)	(2.17)	(2.76)	(4.33)	(0.81)	(2.72)		