

Push-in Fittings

WPMFT SERIES



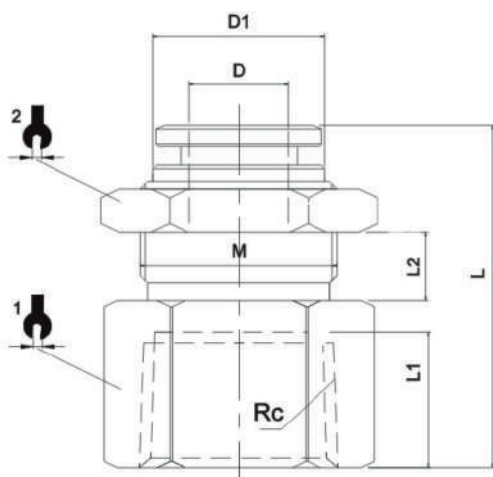
Product features

- It's made of copper pneumatic piping joints
- Not only the body but also the sleeve, both of them are made from copper, which is good for flame resistance, heat resistance and splash performance

Speciality

Operating Temperature	-20~+80°C
Operating Pressure	0-1.0MPa
Fluid	Aia, Vacuum
Applicable Tube	Polyurethane and Nylon

Dimension



MODEL	ϕD	Rc	L	L1	L2	$\phi D1$	1	2	M
WPMFT04-01	4	Rc1/8	23	8.5	6	8.5	14	14	M10X1
WPMFT04-02	4	Rc1/4	25.5	11	6	8.5	17	14	M10X1
WPMFT06-01	6	Rc1/8	28	8.5	7	12	17	17	M14X1
WPMFT06-02	6	Rc1/4	30.5	11	7	12	17	17	M14X1
WPMFT06-03	6	Rc3/8	31.5	12	7	12	21	17	M14X1
WPMFT08-01	8	Rc1/8	29	8.5	7.5	14	19	19	M16X1
WPMFT08-02	8	Rc1/4	31.5	11	7.5	14	19	19	M16X1
WPMFT08-03	8	Rc3/8	32.5	12	7.5	14	21	19	M16X1
WPMFT08-04	8	Rc1/2	34.5	14	7.5	14	24	19	M16X1
WPMFT10-01	10	Rc1/8	31	8.5	9.5	16	21	21	M18X1
WPMFT10-02	10	Rc1/4	33.5	11	9.5	16	21	21	M18X1
WPMFT10-03	10	Rc3/8	34.5	12	9.5	16	21	21	M18X1
WPMFT10-04	10	Rc1/2	36.5	14	9.5	16	24	21	M18X1
WPMFT12-02	12	Rc1/4	35	11	10	18	24	24	M20X1
WPMFT12-03	12	Rc3/8	36	12	10	18	24	24	M20X1
WPMFT12-04	12	Rc1/2	38	14	10	18	24	24	M20X1